

# Paver Installation: Step-by-Step





# Installation Overview

- **Planning, Demolition & Excavation**

- Grass, soil, or existing concrete is removed down to 8-9" and compacted.

- **Preparation and Grading**

- Grading follows a natural slope for water runoff with consideration of the design.
- Base layers are added and compacted to ensure no air gaps; this includes class 2 road base, washed sand and borders.

- **Laying Pavers**

- Pavers are laid evenly, tightly together.

- **Finishing**

- Polymeric sand is brush between the cracks and compacted to solidify placement and provide ant barrier.
- Sealer can be added in this stage to enhance and preserve the look.





# Design and Planning

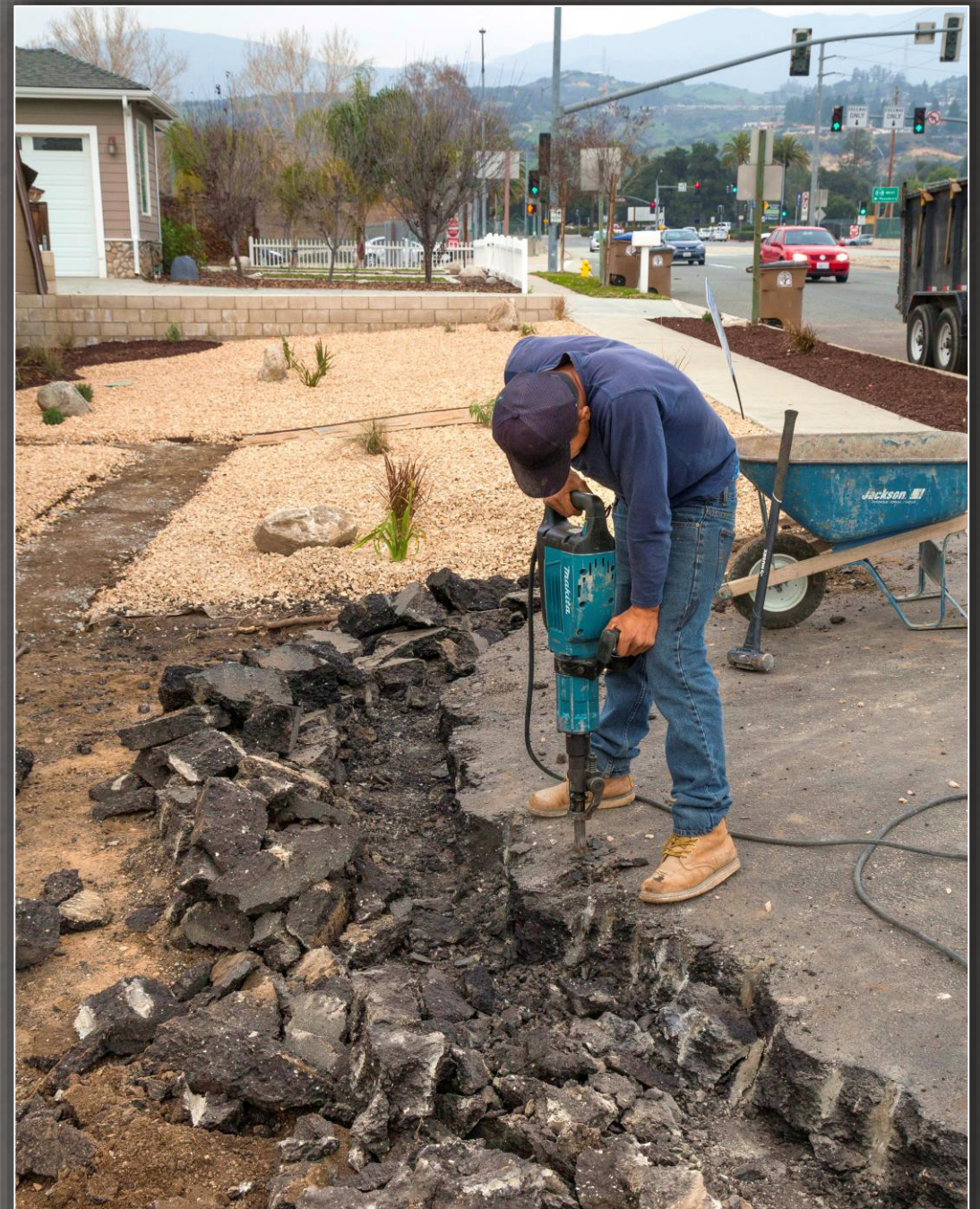
- Pavers are an excellent choice for walkways, patios, and driveways since they are durable, cost-effective, and visually pleasing.
- Now that you've decided to use pavers, it's time to decide on the style, color and finish so that the installation will be a smooth process.
- Selected samples can be found toward the end of this guide to help with process of choosing the ideal design for your space.





# Demolition & Excavation

- Structures are removed, if necessary and ground is excavation to a depth of 8-9" depending on the use of the paved area.
- Driveways require a thicker base and subbase and require deeper excavation.





# Base Preparation



- Class 2 road base is poured, leveled, and packed by layer to prepare for the premium washed base sand.
- Cement edging is used when necessary to provide a clean boundary that secures base material in place.



# Compacting Base Layers

- Compacting the base evenly is important for creating a stable and even paver surface.
- Packing base in layers will remove air gaps in order to avoid uneven settling of the pavers.



# Washed Base

- Premium washed sand is used as the final base layer directly below the pavers.
- Washed sand is important for providing a smooth even surface quality for the pavers that will not degrade with time. This step minimizes need for maintenance.





# Laying the Pavers

- Pavers are placed straight down, tightly up against the other in a pyramidal formation.
- Pavers may need to be cut to fit small gaps toward the end. Proper measurement is crucial to avoid gaps that require sliver pieces or shims to be use.





# Polymeric Sand

- Polymeric sand is poured across the freshly paved surface after they have all been set in place.
- The polymeric sand locks the pavers in place and also prevents pests like ants from being able to tunnel under and between the pavers





# Final Compaction

- A final round of compacting will help stabilize the pavers and solidify them in place.
- In this stage, the polymeric sand pacts tightly in any available air gaps ensuring no further movement.





# Surface Finish



- A sealant is optional, however, it can give a clean wet look or sheen to the surface that some enjoy.





# Design and Style: Color and Layout

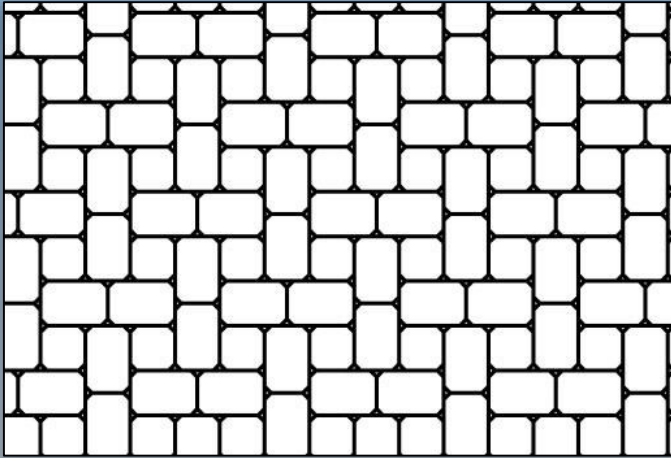
Planning the design and style is a crucial component of a successful paver installation.

Selecting a style (combination of layout and color) that will enhance the surrounding will be made easy with the remainder of this guide.

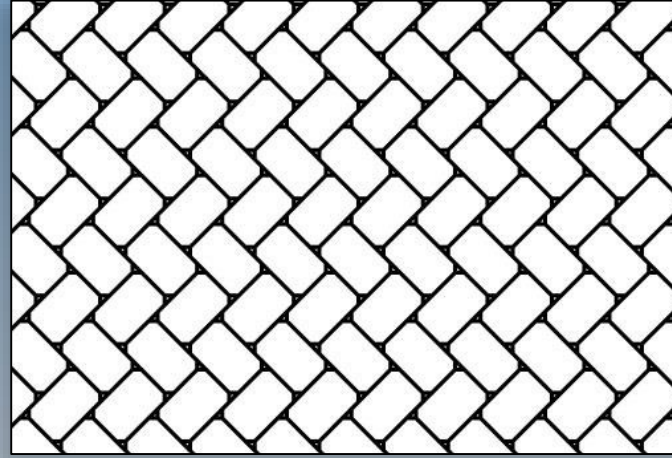
**Layout**, as you will see is simply the pattern in which the pavers are set.



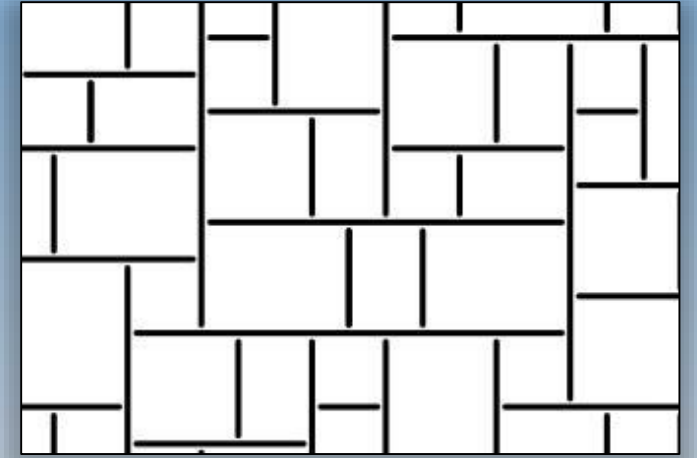
# Layout Examples



Antique Cobble I Pattern



Antique Cobble  
Herringbone 45°



Slate Pattern

**Layout** is simply the pattern in which the pavers are set.



# Available Colors

## PAVING STONES Antique Cobble I & II Colors

*Solid (swatches shown in Antique Cobble I)*



**BROWN**



**CHARCOAL**



**CREAM**



**GRAY**



**MOCHA**



**MOSS**



**RED**



**STONE**



**TERRACOTTA**

The quality and traditional elegance of Antique Cobble pattern make it incredibly popular. We offer a wide range of colors to help satisfy your expectations.



# Available Colors

**Blended** (swatches shown in *Antique Cobble I*)



**CREAM - BROWN - CHARCOAL**



**CREAM - TERRACOTTA - BROWN**



**GRAY - CHARCOAL**



**GRAY - MOSS - CHARCOAL**



**RED - BROWN - CHARCOAL**



**SAND - STONE - MOCHA**



**TUSCAN**

Some prefer *Blended* color palette provides a rustic look compared to the solid colors.



# Available Colors

**Blended** (swatches shown in Courtyard Stone)



CREAM - BROWN - CHARCOAL



CREAM - TERRACOTTA - BROWN



GRAY - CHARCOAL



GRAY - MOSS - CHARCOAL



SAND - STONE - MOCHA



TUSCAN

Shown here in the Castle Cobble layout is the *Blended* palette which further enhances the rustic appearance and the potential of combination do not end here.



# Design Ideas

















